

INON ARM II System

M5 Joint

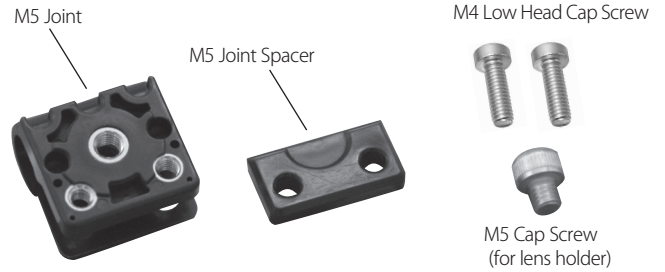
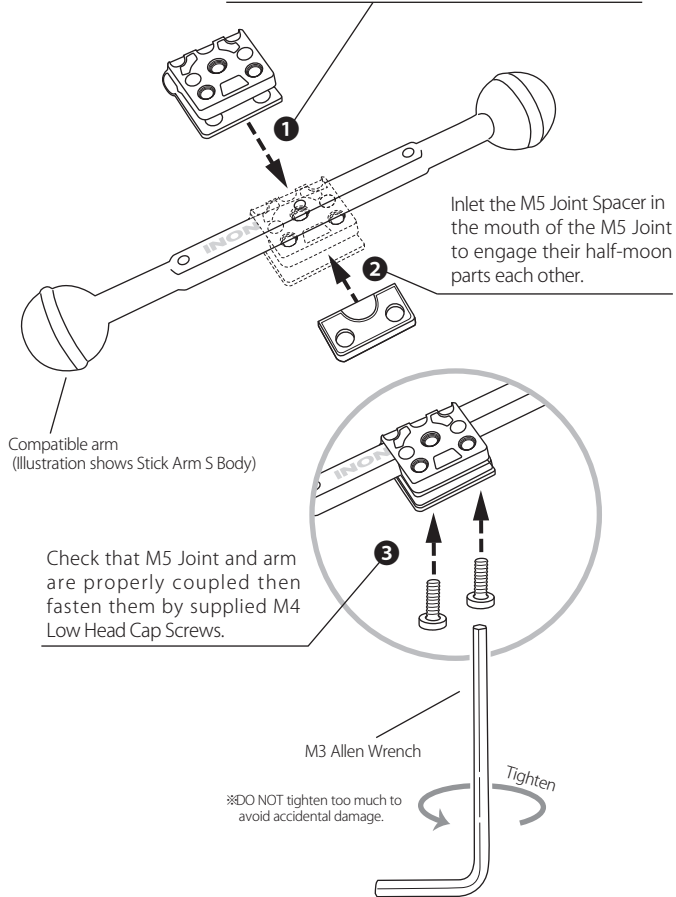
Features

The M5 Joint is an optional product to attach compatible lens holder or the Shoe Base (via Shoe Base Adapter) on Stick Arm Body or Multi Ball Arm Body.

How to attach

● Attach M5 Joint on compatible arm body

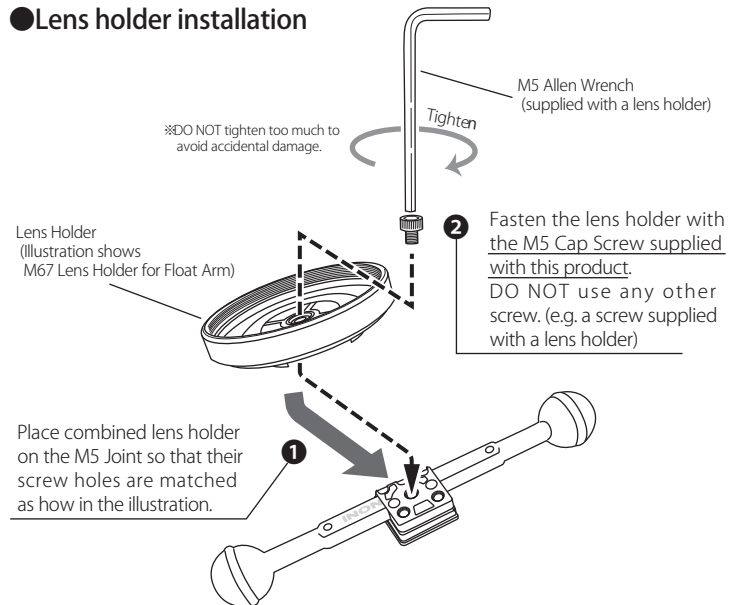
Place the M5 Joint on compatible arm body as shown in the illustration so that D shape cut surface of the combined arm body seats in the D shape cut channel of the M5 Joint, and positioning pin of the M5 Joint seats in a hole of the arm body.



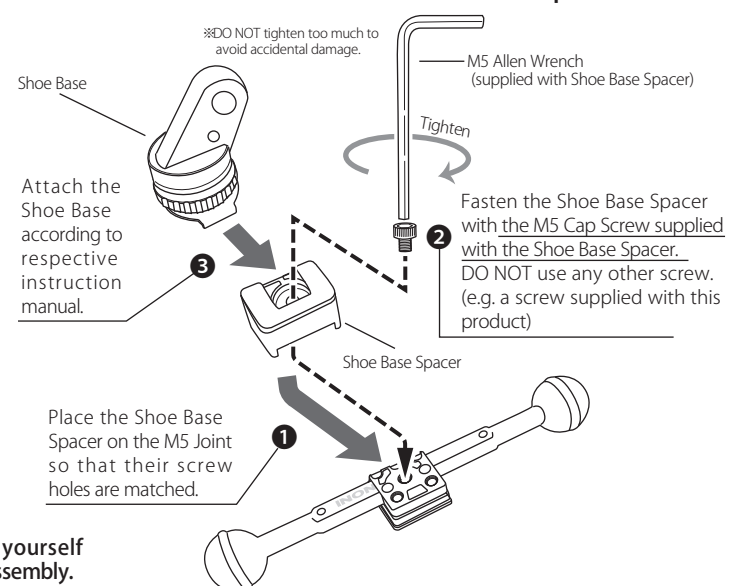
Specifications

Package contents	M5 Joint x 1, M5 Joint Spacer x 1, M4 Low Head Cap Screw x 2, M3 Allen Wrench x 1, M5 Cap Screw (for lens holder) x 1
Material	Polyoxymethylene, brass, stainless
Dimensions	25mm(W) x 18mm(H) x 25.8mm(D), 1.0" (W) x 0.7" (H) x 1.0" (D)
Weight	14.1g (air) / approx.8g (u/w) 0.5oz (air) / approx.0.3oz (u/w)
Compatible arm	Stick Arm XS/SS/S/M/L Body Multi Ball Arm S/ML/L/LL/XL Body (Stick Arm XS Body and Multi Ball Arm S Body is only compatible with the Shoe Base Spacer but not compatible with a lens holder)
Compatible options	AD/LD/M67 Lens Holder for Float Arm, AD/LD/M67 Lens Holder DP for Float Arm, AD Lens Holder, LD/M67 Lens Holder W, Shoe Base Spacer

● Lens holder installation



● Installation of the Shoe Base via Shoe Base Spacer



※ Be careful not to pinch your fingers during installation and protect yourself against unexpected and sudden come off of combined parts during disassembly.