

INON

INON Float Arm System

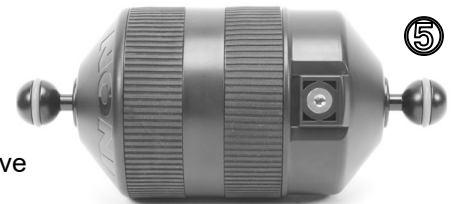
Thank you for purchasing INON product.

The INON Float Arm System (Float Arm/Mega Float Arm) is a strobe arm system compatible with INON Arm II System using light weather-resistant ABS material creating extraordinary buoyancy. Combinations of five different length/buoyancy product type provide perfect solution to obtain desired underwater weight of your camera system. "Underwater weight chart" on the reverse side shows total underwater weight combined with camera/camera system.

- Package contents:**
- Float Arm Body ×1
 - (Float Arm S ①)
 - (Float Arm M ②)
 - (Float Arm ML ③)
 - or
 - Mega Float Arm Body ×1
 - (Mega Float S ④)
 - (Mega Float M ⑤)
 - Cap Screw ⑥ ×2
(to attach optional "lens holder")
 - This user manual ×1



- Maintenance/Storage:**
- After each use, rinse with fresh water to dissolve any salt build-up and clean the product. Place in shaded and well ventilated area to completely dry. Never apply flame or direct heat or deformation/damage may result.
 - Store the product in shaded, well ventilated and dry area. Avoid storing near chemicals or in the area with cold/high temperature, high humidity or large temperature and humidity fluctuations to prevent deformation, mold, rust or corrosion.
 - Do not clean with organic solvent like alcohol, benzene or thinner and oil and fat containing/chemical material like rust inhibitor, lubricant, polish or chemical agents (especially alkaline cleaning agents). This product is made from ABS resin etc., which will dissolve or get brittle if put in contact with such materials.
 - Keep this product out of reach of children. They may swallow accessories or small parts of this product. See a doctor immediately if a child swallow accessories or small parts.



- Handling precautions:**
- When transporting combined system using this product, be sure to hold whole camera/camera system instead holding this product, strobe or camera only and do not apply excessive shock, vibration or excessive load on the combined system to avoid this product/strobe/housing/protector being fell off/damaged/ missing. This product is made from resin and performance could be affected in case of damage on resin material or bonding plane due to aging degradation. It is important to follow maintenance/storage instruction and handling precautions in this manual to retard aging.

- Options :**
- M67 Lens Holder for Float Arm
 - LD Lens Holder for Float Arm
 - AD Lens Holder for Float Arm

Optional product to hold INON M67/LD/AD/28AD Mount series attachment lens to support comfortable transportation and speedy lens exchange underwater. Maximum two lens holders are attached on this product for carrying multiple lenses. (Image shows M67 Lens Holder for Float Arm)



- Shoe Base Spacer

Optional product to attach 「Shoe Base」 on this product to hold a strobe or LED flashlight.



INON Float Arm System specifications [*1]

Model	Float Arm S	Float Arm M	Float Arm ML	Mega Float Arm S	Mega Float Arm M
Effective length	150mm/5.9"	200mm/7.9"	260mm/10.2"	150mm/5.9"	200mm/7.9"
Outer diameter	52mm/2.0"	52mm/2.0"	52mm/2.0"	97mm/3.8"	97mm/3.8"
Weight (air)	Approx. 142g/5.0oz	Approx. 181g/6.4oz	Approx. 235g/8.3oz	Approx. 219g/7.7oz	Approx. 295g/10.4oz
Weight (u/w)	Approx. -75g/-2.6oz	Approx. -135g/-4.8oz	Approx. -210g/-7.4oz	Approx. -390g/-13.8oz	Approx. -650g/-22.9oz
Material	ABS resin / corrosion-resistant aluminum alloy / rubber etc.				
Depth rating	70m / 230'				

INON Inc.

2-18-9, Dai, Kamakura,
Kanagawa 247-0061 JAPAN
E-mail support@inon.co.jp
Fax. +81(0)467-48-2178
URL <http://www.inon.jp/>

[*1] Product specification is subject to change without prior notice.

March 2012

All right reserved. No part of this manual may be reproduced or transmitted in any form or by any means, electronic or mechanical, including photocopy, recording on any information storage and retrieval system now known or to be invented, without permission in writing from INON Inc.

Underwater weight (estimate value in fresh water, calculated based on freshwater density = 1)

For detailed underwater weight of each product is listed on INON web site at;
http://www.inon.jp/products/armsystem/weight_table.html

Product	U/W Weight	Product	U/W Weight	Product	U/W Weight
Strobe					
Z-240 Strobe (TYPE-4) incl."eneloop"	77g/2.7oz	D-2000 Strobe (TYPE-4) incl."eneloop"	47g/1.7oz	S-2000 Strobe (TYPE-4) incl."eneloop"	69g/2.4oz
Strobe Option					
-0.5/-1.5 Diffuser 2 (TTL/Manual)	5g/0.2oz	-0.5/-1.5 Diffuser 2 (External Auto)	10g/0.4oz		
Lens					
UCL-165AD	35g/1.2oz	UWL-105AD	142g/5.0oz	UFL-165AD	85g/3.0oz
UCL-330	75g/2.6oz	UCL-165M67	73g/2.6oz	UWL-100 Achromat Type1/Type2	370g/13.1oz
UWL-100 28AD	209g/7.4oz	UCL-165LD	72g/2.5oz	UWL-H100 28LD	326g/11.5oz
UWL-H100 28M67 Type1	345g/12.2oz	UWL-H100 28M67 Type2	346g/12.2oz	UFL-M150 ZM80	47g/1.7oz
UWL-100 Achromat Type1/Type2 (with Dome Lens Unit II for UWL-100)	533g/18.8oz	UWL-100 28AD (with Dome Lens Unit II for UWL-100)	400g/14.1oz	UWL-H100 28LD (with Dome Lens Unit II for UWL-H100)	505g/17.8oz
UWL-H100 28M67 Type1 (with Dome Lens Unit II for UWL-100)	525g/18.5oz	UWL-H100 28M67 Type2 (with Dome Lens Unit II for UWL-100)	526g/18.6oz		
Lens Option					
AD Lens Holder (single caddy mounted)	12g/0.4oz	AD Lens Holder (double caddy mounted)	18g/0.6oz	AD Lens Holder for Float Arm	6g/0.2oz
M67 Lens Holder S	31g/1.1oz	M67 Lens Holder W	60g/2.1oz	M67 Lens Holder for Float Arm	25g/0.9oz
LD Lens Holder S	14g/0.5oz	LD Lens Holder W	20g/0.7oz	LD Lens Holder for Float Arm	7g/0.2oz
Lens Hood for UWL-100 28AD (hood only)	33g/1.2oz	Lens Hood for UWL-H100 28LD (hood only)	11g/0.4oz	Lens Hood for UWL-100 28AD (with UWL-100 28AD)	242g/20.7oz
Lens Hood for UWL-H100 28LD(with UWL-H100 28LD)	337g/11.9oz	AD-LD Mount Converter for UCL-165AD	23g/0.8oz	M67-LD Mount Converter for UCL-330/165M67	17g/0.6oz
M27-AD Mount Converter for UFL-M150 ZM80	27g/1.0oz	M27-M67 Mount Converter for UFL-M150 ZM80	40g/1.4oz	M27-LD Mount Converter for UFL-M150 ZM80	42g/1.5oz
Mount Base / Video Base / Lens Adapter Base					
AD, 28AD, 28AD/AD Mount Base	60-90g 2.1-3.2oz	M67 Mount Base	55-95g 1.9-3.4oz	LD Mount Base	79-92g 2.8-3.2oz
Video Base V1	119g/4.2oz	Video Base V2	125g/4.4oz	Video Base V4	122g/4.3oz
M67 Lens Adapter Base MCTZ20	64g/2.3oz	M67 Lens Adapter Base MCTZ10	68g/2.4oz	M67 Lens Adapter Base MCTZ7/TZ5	68g/2.4oz
M67 Lens Adapter Base MCZ3X/ZX1	64g/2.3oz	M67 Lens Adapter Base FFX500	77g/2.7oz	M67 Lens Adapter Base FFX80	59g/2.1oz
M67 Lens Adapter Base FFX200	59g/2.1oz				
Arm Body					
Stick Arm XS Body	25g/0.9oz	Stick Arm SS Body	31g/1.1oz	Stick Arm S Body	34g/1.2oz
Stick Arm M Body	43g/1.5oz	Stick Arm L Body	63g/2.2oz	Multi Ball Arm SS Body	37g/1.3oz
Multi Ball Arm S Body	42g/1.5oz	Multi Ball Arm ML Body	56g/2.0oz	Multi Ball Arm L Body	69g/2.4oz
Multi Ball Arm LL Body	75g/2.6oz	Multi Ball Arm XL Body	87g/3.0oz	Arm XS Body	29g/1.0oz
Arm SS Body	40g/1.4oz	Arm S Body	44g/1.6oz	Arm M Body	52g/1.8oz
Arm L Body	74g/2.6oz	YS Arm MS Body	43g/1.5oz	YS Arm M Body	49g/1.7oz
Float Arm S	-75g/-2.6oz	Float Arm M	-135g/-4.8oz	Float Arm ML	-210g/-7.4oz
Mega Float Arm S	-390g/-13.8oz	Mega Float Arm M	-650g/-22.9oz		
Connecting Parts					
Clamp III	33g/1.2oz	Direct Base III	23g/0.8oz	Multi Direct Base II WB	33g/1.2oz
Multi Direct Base II Long	28g/1.0oz	Z Adapter MV	16g/0.6oz	Z Joint	23g/0.8oz
YS Adapter MV	7g/0.2oz	Double YS Adapter MV	11g/0.4oz	YS Adapter WB MV	13g/0.5oz
Arm Option					
M6 Joint	15g/0.5oz	M5 Joint	8g/0.3oz	Shoe Base Spacer	12g/0.4oz
M6 Plate Direct Base III	15g/0.5oz	M5 Plate Direct Base III	13g/0.5oz	Shoe Base Adapter D4	6g/0.2oz
D Holder Extension Bar	34g/1.2oz	YS Adapter Fixing Bolt	8g/0.3oz	Stick Arm Float S	-84g/-3.0oz
Tripod Adapter	16g/0.6oz	Arm Float S	-70g/-2.5oz		
Arm Set					
Direct Arm Z-MV Set	72g/2.5oz	Stick Arm XS Set Z-MV	130g/4.6oz	Stick Arm SS Set Z-MV	136g/4.8oz
Stick Arm S Set Z-MV	139g/4.9oz	Stick Arm M Set Z-MV	148g/5.2oz	Stick Arm L Set Z-MV	168g/5.9oz
Direct Arm YS-MV Set	63g/2.2oz	Stick Arm XS Set YS-MV	121g/4.3oz	Stick Arm SS Set YS-MV	127g/4.5oz
Stick Arm S Set YS-MV	130g/4.6oz	Stick Arm M Set YS-MV	139g/4.9oz	Stick Arm L Set YS-MV	159g/5.6oz
Direct Arm D Set	79g/2.8oz	Stick Arm XS Set D	137g/4.8oz	Stick Arm SS Set D	143g/5.2oz
Stick Arm S Set D	146g/5.2oz	Stick Arm M Set D	155g/5.5oz	Stick Arm L Set D	175g/6.2oz
Base					
Grip Base D4	142g/5.0oz	Grip Base D4 Set	165g/5.8oz	D Holder	77g/2.7oz
Shoe Base	20g/0.7oz	Grip Base M1	150g/5.3oz	D Base M1	73g/2.6oz
Holder II Set [under surface]	66g/2.3oz	Holder II Grip Set [under surface]	196g/6.9oz	Holder II [under surface]	-8g/-0.3oz
Main Base II	74g/2.6oz	Grip+Bar III Set	130g/4.6oz	Shoe Base Adapter X-2	6g/0.2oz
Light					
LE550-W incl."eneloop"	132g/4.7oz	LE550-S incl."eneloop"	130g/4.6oz	LE250 incl."eneloop"	120g/4.2oz
LE240 incl."eneloop"	91g/3.5oz	Single Light Holder LE	31g/1.1oz	Double Light Holder LE	29g/1.0oz
Quad Light Holder LE	48g/1.7oz	Strobe Light Holder LE	35g/1.2oz		
X-2 Housing					
X-2for GF2+8mm/F3.5 FISHEYE + Dome Port2 +Shade 2 set	380g/13.4oz	X-2for GF2+8mm/F3.5 FISHEYE + Dome Port 115	365g/12.9oz	X-2for GF2+20mm/F1.7 + Pancake Port	287g/10.1oz
X-2 for GF2+45mm/F2.8 O.I.S. MACRO+ MRS Base Port + Front Port Macro + MRS Magnet Ring DG45 Set	455g/16.0oz	X-2 for GF2+45mm/F2.8 O.I.S. MACRO + MRS Base Port (without MRS Control Ring) + Front Port Macro	320g/11.3oz	X-2 for GF2+45mm/F2.8 O.I.S. MACRO + Extension Ring 36 + Pancake Port	285g/10.1oz
X-2 for GF2+14.45mm/F3.5-5.6 O.I.S. + MRS Base Port + Front Port Wide+ MRS Magnet Ring G14-45 Set	385g/13.6oz	X-2 for GF2+14.42mm/F3.5-5.6 O.I.S. + MRS Base Port + Front Port Wide + MRS Magnet Ring G14-42 Set	352g/12.4oz	X-2 for GF2+7-14mm/F4.0 + MRS Base Port + Front Port Dome115 + MRS Magnet Ring G7-14 Set	520g/18.3oz
X-2 for GF2+14.42mm F3.5-5.6 II R +MRS Base Port + Front Port Flat5 +Magnet Ring MZ14-42 Set	367g/12.9oz	X-2for GF2+ 12.5mm/F12(3D) + Pancake Port	267g/9.4oz	X-2 for EOS60D PF2 AT-X107DX FISHEYE Set(*2)	505g/17.8oz
X-2 for EOS60D PF2 EF-S18-55mm Set(*2)	275g/9.7oz	X-2 for EOS60D PF2 EF100mm Macro USM Set(*2)	505g/17.8oz	X-2 for EOS60D PF2 EF-S60mm Macro USM Set(*2)	435g/15.3oz
X-2 for EOS60D 45VF (weight difference from PF2 version)	+120g/4.2oz	X-2 for EOS60D Straight VF (weight difference from PF2 version)	+85g/-3.0oz	X-2 for EOS60D FW (weight difference from PF2 version)	0g/0oz
Camera (video /housing) (*4)					
Panasonic LUMIX TZ30/DMW-MCTZ30	-68g/-2.4oz	Panasonic LUMIX TZ20/DMW-MCTZ20	-45g/-1.6oz	Panasonic LUMIX TZ10/DMW-MCTZ10	-88g/-3.1oz
Panasonic LUMIX TZ7/DMW-MCTZ7	-84g/-3.0oz	Panasonic LUMIX TZ5/DMW-MCTZ5	-76g/-2.7oz	Panasonic LUMIX ZX3/DMW-MCZX3	-15g/-0.5oz
Panasonic LUMIX ZX1/DMW-MCZX1	-12g/-0.4oz	Panasonic LUMIX FT4/DMW-MCFT3	37g/1.3oz	Panasonic LUMIX FT3/DMW-MCFT3	37g/1.3oz
Panasonic LUMIX FT2/DMW-MCFT2	42g/0.4oz	Canon PowerShot SX260 HS/ WP-DC46	-90g/-3.2oz	Canon PowerShot G1 X/ WP-DC44	-82g/-2.9oz
Canon PowerShot S100/ WP-DC43	-48g/-1.7oz	Canon PowerShot S95/ WP-DC38	-60g/-2.1oz	Canon PowerShot S90/ WP-DC35	-69g/-1.2oz
Canon PowerShot G12/ WP-DC34	-168g/-5.9oz	Canon iVHS HF M51(Supplied Battery)/ WP-V4	-292g/-10.3oz	Canon iVHS HF M51(Battery Pack BP-727)/ WP-V4	-282g/-9.9oz
Canon iVHS HF M41(Supplied Battery)/ WP-V3	-311g/-11.0oz	Canon iVHS HF M41(Battery Pack BP-819D)/ WP-V3	-272g/-9.6oz	Canon iVHS HF M31(Battery Pack BP-819D)/ WP-V2	-241g/-8.5oz
FUJIFILM FinePix F600EXR/ WP-FXF500	-18g/-0.6oz	FUJIFILM FinePix F800EXR/ WP-FXF80	-59g/-2.1oz	FUJIFILM FinePix F200EXR/ WP-FXF200	-61g/-2.2oz
Olympus E-PM1 + M.ZUIKO 14-42mm/IR/ PT-EP06L(*3)	-112g/-4.0oz	Olympus E-PL3 + M.ZUIKO 14-42mm/IR/ PT-EP05L(*3)	-54g/-1.9oz	Olympus E-PL2 + M.ZUIKO 14-42mm/IR/ PT-EP03	-54g/-1.9oz
Olympus E-PL1 + M.ZUIKO ED 14-42mm/ PT-EP01	-220g/-7.7oz	Olympus TG-820/ PT-052	30g/1.1oz	Olympus TG-810/ PT-051	68g/2.4oz
Olympus XZ-1 + MT-050	-91g/-3.2oz				

(*2) Heaviest combination including camera/lens/port/focus-zoom gear.「PF2」: X-2 Housing with Pick-up Finder unit 2

(*3) Including camera batter/housing batteries(AAA Alkaline x 2)/Zoom Gear(PZR-EP02)/Anti-Reflective Ring(POS-EP05)/LCD Hood(PFUD-EP05) but excluding Diffuser(PTDP-EP05)/Body Cap (PBC-EP01).

(*4) Measured value including camera/battery/recording media but excluding balance weight and pre-installed diffuser panel which is removed when Mount Base or Lens Adapter is attached. May differ from manufactures' nominal value.