

INON

INON SD Mount Base UWH1

Thank you for purchasing INON product.

INON SD Mount Base UWH1 is a multi-purpose product to attach INON SD Mount series attachment lens, Monitor Housing, arm etc. on the genuine housing 「MPK-UWH1」 for the 4K action camera, Sony「FDR-X3000/X3000R」and 「HDR-AS300/AS300R」.

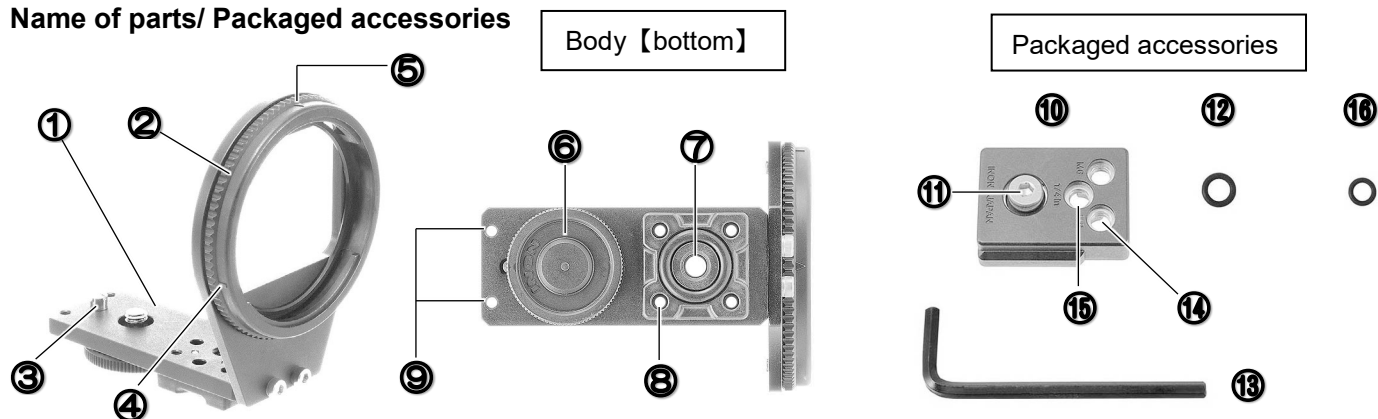
Before Using This Product

Although the genuine housing 「MPK-UWH1」 can also store other model 「HDR-AS50」, INON attachment lenses are *not* compatible with the 「HDR-AS50」 due to master lens position.

Features

- Equipped with INON “**SD Mount**” bayonet system. With 「SD Mount」, INON 「UFL-G140 SD」 underwater semi-fisheye conversion lens (*1) or 「UCL-G165 SD」 underwater wide close-up lens (*1) exclusively designed for an action camera can be easily, quickly and reliably mounted/detached underwater. Of course the SD Mount Base UWH1 is usable without any attachment lens (*2)
- INON 「Direct Base III」, 「Z Joint」 or 「Z Adapter MV」 can be attached on the bottom of this product.
- Packaged Mount Adapter enables to add the optional D Holder on right or left side as well as monopod or tripod on the bottom of this product.
- Installing optional Male Adapter on the bottom of this product enables to use GoPro compatible mount.
- Optional「Monitor Housing for LVR3」allows to use Sony Live-View Remote "RM-LVR3"(*3) underwater.

Name of parts/ Packaged accessories



1. SD Mount Base UWH1 body
2. Lens Mount (SD bayonet mount)
3. Video Boss
4. Guide A
5. Guide B
6. 1/4 Tripod Screw (titanium color)
7. Optional Accessory Fixing Hole (M6)
8. Male Adapter Fixing Hole (M3x4)
9. Optional Monitor Housing Fixing Hole (M3 Screw Hole x 2)

10. Mount Adapter for SD Mount Base/SD Front Mask
11. M6x14 Low Head Cap Screw*
*pre-installed on Mount Adapter
12. Spare O-ring (hold M6x14 Low Head Cap Screw)
13. Allen Wrench (WAF: 4mm)
14. D Holder Fixing Hole (M6x2)
15. Tripod Screw Hole (1/4 in.)
16. Spare O-ring (to retain 1/4 Tripod Screw)
17. This user manual

Compatible camera/ housing : · Camera: Sony「FDR-X3000/X3000R」 「HDR-AS300/AS300R」
Housing: Sony「MPK-UWH1」
(as of March 2017)

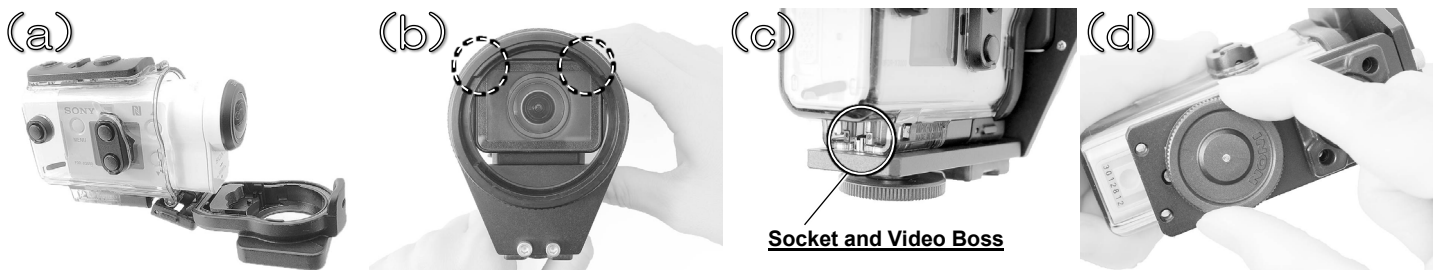
Compatible lens and : · SD Mount Lens
(as of March 2017)
➢ INON「UFL-G140 SD」underwater semi fisheye conversion lens (*1)
➢ INON「UCL-G165 SD」underwater wide close-up lens (*1)
· Compatible products attached on the [bottom] of this product
➢ INON 「Direct Base III」 「Z Joint」 「Z Adapter MV」
· Compatible parts attached on the [bottom] via packaged [Mount Adapter]
➢ INON 「D Holder」 (attached at 2 x M6 screw holes ⑬)
➢ Tripod, monopod (attached at 1/4tripod screw hole ⑭)

- Compatible parts attached on the [bottom] via optional [Male Adapter]
 - GoPro compatible third party's mount etc.
- Compatible optional product attached on this product
 - INON 「Monitor Housing for LVR3」

- *1: Both 「UFL-G140 SD」 and 「UCL-G165 SD」 are designed for underwater use only and not usable on land.
- *2: When using on land, vignetting will be observed even without an attachment lens. (No vignetting underwater)
- *3: This product only comes with when purchasing "Body + Live-View Remote Kit".

Installing「SD Mount Base」:

- Store the camera in the genuine housing 「MPK-UWH1」 in referring to the user manual of the housing.
- Set this product on the housing so that there is no gap between upper corners of 「MPK-UWH1」 and the opening of the lens mount.
- Then seat the 「MPK-UWH1」 on the Mount Base body so that the 「Video Boss」 sits in the 「Socket」 of the housing.
- Fasten this product and 「MPK-UWH1」 by tightening the 1/4 Tripod screw.



Installing accessory:

「Direct Base III」, 「Z Joint」, 「Z Adapter MV」

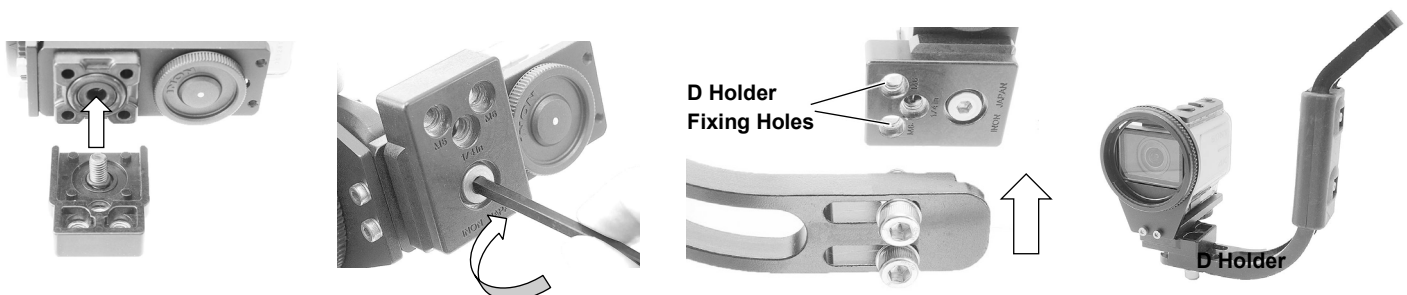
Directly attachable at "M6 Screw Hole" on the bottom of this product.



「D Holder」 via 「Mount Adapter for SD Mount Base/SD Front Mask」

Attach the 「Mount Adapter for SD Mount Base/SD Front Mask」 by screwing pre-installed M6 Screw on the Mount Adapter into "M6 Screw Hole" on the bottom of this product by using supplied Allen Wrench (WAF: 4mm). Optional D Holder is attached at 2 x D Holder Fixing Holes on the Mount Adapter.

- * The D Holder can be installed either left or right by changing Mount Adapter orientation.



「Monopod」,「Tripod」 via 「Mount Adapter for SD Mount Base/SD Front Mask」

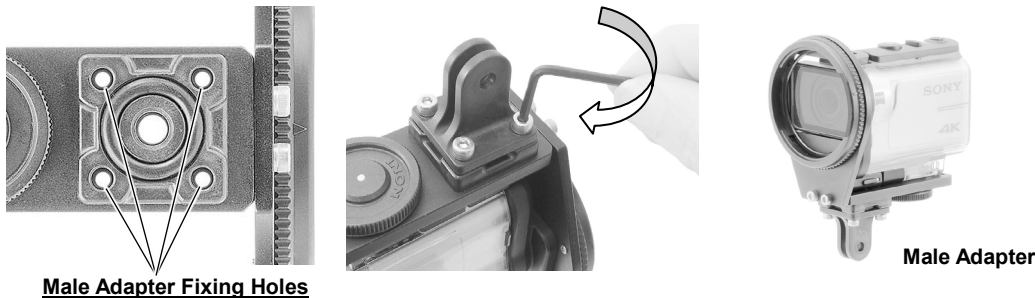
Attach the 「Mount Adapter for SD Mount Base/SD Front Mask」 by screwing pre-installed M6 Screw on the Mount Adapter into “M6 Screw Hole” on the bottom of this product by using supplied Allen Wrench (WAF: 4mm). A tripod/monopod can be attached at Tripod Screw Hole (1/4in.) on the Mount Adapter.



Optional 「Male Adapter」

Place the adapter on the bottom of this product and fix with 4 x Male Adapter Fixing Screws at “Male Adapter Fixing Holes” by using Allen Wrench (WAF:2.5mm)

*“Male Adapter Fixing Screws” and “Allen Wrench (WAF:2.5mm)” are packaged with Male Adapter.



Installing Optional 「Monitor Housing for LVR3」

Refer to 「Monitor Housing for LVR3」 user manual to see installation method of the 「Monitor Housing for LVR3」

- Maintenance** :
- **Whenever installing a cap screw, make sure to apply a thin film of grease on the edge of the threaded screw shaft to prevent anchoring due to salt build-up.**
 - After using, soak in fresh water to dissolve remaining salt or remove dirt and dry it in shaded and well-ventilated area. Never apply flame or direct heat to this product or damage may result.
 - **DO NOT** clean with organic solvent like alcohol, benzene or thinner and oil and fat containing/chemical material like rust inhibitor, lubricant, polish, detergent(especially alkaline detergent) to avoid damage/deformation/degradation of this product.
 - Remove the SD Mount Base from the MPK-UWH1 when not using more than one week to avoid damage/deformation of compatible product resulting from continuous pressure.

- Handling precautions** :
- It is necessary to remove this product from the housing to take out the camera. Remove this product when you need to change camera battery or remove storage card.
 - Please note that camera manufacture has no concern with installation of this product on the camera/housing. **DO NOT** inquire camera/housing manufacture about the installation. Also please note that you have to take full responsibility for the installation.
 - INON Inc. cannot take any responsibility for any trouble/damage (damage to housing/housing accessories /camera) resulting from the installation.
 - Should you have trouble like flooding caused by the installation, INON Inc. cannot take any responsibility for incidental damage (relevant expense to take a shot etc.)
 - **Please perform the installation only if you can accept above conditions.**

- Options** :
- **Monitor Housing for LVR3**
A dedicated underwater housing for Live-View Remote "RM-LVR3" bundled with the compatible camera, 『FDR-X3000R』 / 『HDR-AS300R』 when purchasing as “Body + Live View Remote Kit”. The Monitor Housing is designed to attach on back of INON "SD Mount Base UWH1" to use Sony Live-View Remote "RM-LVR3" underwater enabling you to check composition when filming/shooting underwater.



- UFL-G140 SD Underwater Semi-fisheye Conversion Lens

An underwater semi-fisheye conversion lens to use with this product to increase native coverage of the action camera underwater to 『approx. 140 degrees』. The lens also shorten minimum focusing distance to capture a subject from only a few centimeters away from a subject.



- UCL-G165 SD Underwater Wide Close-up Lens

An underwater wide close-up lens to use with this product to drastically shorten minimum focusing distance to enable close-up/high magnification imaging by the camera. This lens is designed to widen native underwater coverage of the action camera to 『approx. 110 degrees』 to have more depth of field not as like a standard close-up lens.



- Direct Base III

A ball-joint adapter to hold arm product with optional clamp on bottom of this product.



- Z Adapter MV

A ball-joint adapter attachable on the bottom of this product. Since the ball-joint is protruded at an angle against its base, the ball-joint can be installed at different angles by rotating the adapter. Plastic ball-joint provides comfortable adjustment of combined product without loosening 「Clamp III」.



- Z Joint

An adapter attachable on the bottom of this product to attach on the 「Y/S Adapter」 compatible arm” products such as 「Shoe Base」, 「D Holder」 or 「Y/S Adapter MV」 etc.



- D Holder

Optional grip holder to add INON arm system on right or left side of this product to hold and carry the whole system by single hand comfortably as well as to add INON arm system to hold a LED flash light etc.



- Male Adapter (GoPro) for SD Mount Base/SD Front Mask

An optional adapter enables to attach GoPro compatible mount on the bottom of this product.



- Mount Adapter for SD Mount Base/SD Front Mask

A set of ⑨⑩⑪⑫ in the packaged accessory shown on the first page of this manual.

INON SD Mount Base Specifications [*1]	
Model	SD Mount Base UWH1
Size (*including protruted parts)	65.4mm/2.6in.(W) x 88.0mm/3.5in.(H) x 83.6mm/3.3in.(D)
Weight	70g/2.5oz (air) / approx.40g/1.4oz (underwater)
Material / finishing	Corrosion-resistant aluminum alloy/rigid alumite, POM etc.

*1 Subject to change without prior notice

*2 All brand name, product name and function name in this manual are trademarks or registered trademarks of respective manufactures

INON Inc.
2-18-9, Dai, Kamakura,
Kanagawa 247-0061 JAPAN
E-mail support@inon.co.jp
Fax. +81(0)467-48-2178
URL http://www.inon.jp/
March 2017