

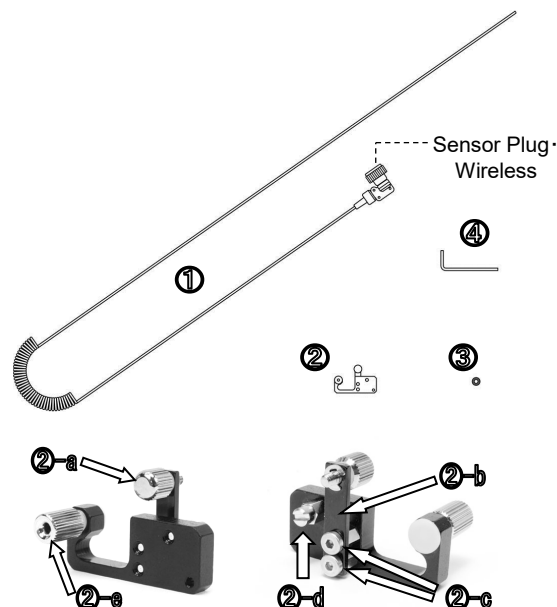
# INON

## INON Optical D Slave Cable 2 Type L

Thank you for purchasing INON product.

INON Optical D Slave Cable 2 Type L is a slave cable to control focus light / target laser of a slave strobe by master strobe's focus light / LED. Only certain combination can have full benefit of this product. Refer to [Compatible master strobe] / [Compatible slave strobe] below for detail.

- Package contents :**
- Optical D Cable LL Type L① ×1
  - Slave D Holder Unit ② ×1
    - Slave D Holder Fixing Dial ②-a
    - Slave D Holder Fixing Bar ②-b
    - Slave D Holder Fixing Bar Cap Screw ②-c
    - Slave D Holder Guide Pin ②-d
    - Optical D Cable Fixing Dial ②-e
  - Spare O-ring ③ ×1
  - Allen Wrench ④ ×1
  - This user manual ×1



- Compatible master strobe :**
- INON Z-240
  - INON D-2000, D-2000S, D-2000W/Wn
  - INON D-180, D-180S
  - INON Z-200, Z-220F, Z-220S
- (as of November 2018)

- Compatible slave strobe (※1)**  
(as of July 2009)
- Wireless compatible strobes (Optical D Cable Type L is attached as it is)**
- INON Z-330, D-200, S-2000, Z-240 【Type 4】 , D-2000 【Type 4】

**Wireless non-compatible strobes (Sensor Plug has to be replaced with optional "Sensor Plug · Non-Wireless" (※))**

- INON Z-240【Type 3/ Type 2/ Type 1】, D-2000【Type 3/ Type 2/ Type 1】, D-2000W, D-2000Wn, D-2000S, D-180, D-180S, Z-220F, Z-220S, Z-220
- INON TTL Sensor Z + INON Z-22
- INON TTL Sensor SB + compatible TTL auto strobe
- INON TTL Sensor YS + compatible TTL auto strobe
- INON Focus Light Controller + INON Z-220F/Z-220S/Z-220/Z-22



***「Sensor Plug · Non-Wireless」**  
【Optional】*

(※) Refer to an instruction manual 「L-Connector Modification Instruction」 which comes with the optional 「Sensor Plug · Non-Wireless」 for detail of replacement

- ※1 This product is also attached on following diffusers for compatible master strobes and supplied “-0.5 Diffuser”/“-1.5 Diffuser” included in 「Z-240」 . The Z-240 shipped after July 2009 comes with -0.5 White Diffuser 2 only. Following compatible “diffusers” are available as optional accessory;
- 「-0.5 White Diffuser (External Auto)」, 「-0.5 White Diffuser 2 (External Auto)」
  - 「-0.5 Blue Diffuser (External Auto)」, 「-0.5 Blue Diffuser 2 (External Auto)」
  - 「-1.5 White Diffuser (External Auto)」, 「-1.5 White Diffuser 2 (External Auto)」
  - 「-1.5 Blue Diffuser (External Auto)」, 「-1.5 Blue Diffuser 2 (External Auto)」
  - 「-0.5 White Diffuser (TTL/Manual)」, 「-0.5 White Diffuser 2 (TTL/Manual)」
  - 「-0.5 Blue Diffuser (TTL/Manual)」, 「-0.5 Blue Diffuser 2 (TTL/Manual)」
  - 「-1.5 White Diffuser (TTL/Manual)」, 「-1.5 White Diffuser 2 (TTL/Manual)」
  - 「-1.5 Blue Diffuser (TTL/Manual)」, 「-1.5 Blue Diffuser 2 (TTL/Manual)」
  - 「-3 White Diffuser (Manual)」
- ※2 TTL operation (TTL slave) is available only for master strobe: 「Z-220」/「Z-220F」/「Z-220S」. Optional 「TTL Sensor Z」 or 「Focus Light Controller」 is necessary to use the 「Z-22」 as a slave strobe.

For master strobe Z-240 【Type4/Type3】 /D-2000 【Type4/Type3】 , make sure to use this product to connect to a slave strobe to ensure proper operation. 「Optical D Slave Cable Type L」 / 「Optical D Slave Cable」 is NOT usable.

When different strobes are used as a master and a slave, unintentional imbalance may be observed except both strobes are set to Manual mode. [e.g. Imbalance flash output though intending to create 『flat lighting』 with equal flash output from master/slave strobe etc.]

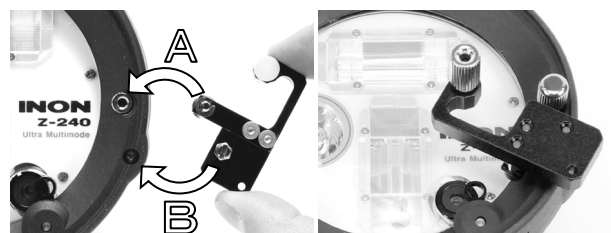
This is normal because each strobe model has unique specification like [maximum flash power/flash time/flash intensity per unit time] or imbalance caused by operational characteristic of slave flashing in each auto flash mode.

To adjust flash output balance, 『flash output adjustment on each strobe』, 『using appropriate “diffuser”』 or 『attaching both strobe directly to camera system (without using this product)』 may be necessary. Refer to strobe’ s user manual for recommended connection/setting for dual strobe configuration.

#### Installation method : • Attach Slave D Holder Unit

##### When not using a diffuser

As in the right image, place the Slave D Holder Unit on right hand side (Focus Light / LED side) of compatible strobe so that its Fixing Dial fits in a screw hole[A] and Guide Pin fits in a guide hole[B] then tighten the “Slave D Holder Fixing Dial” to securely fasten the unit on the strobe.



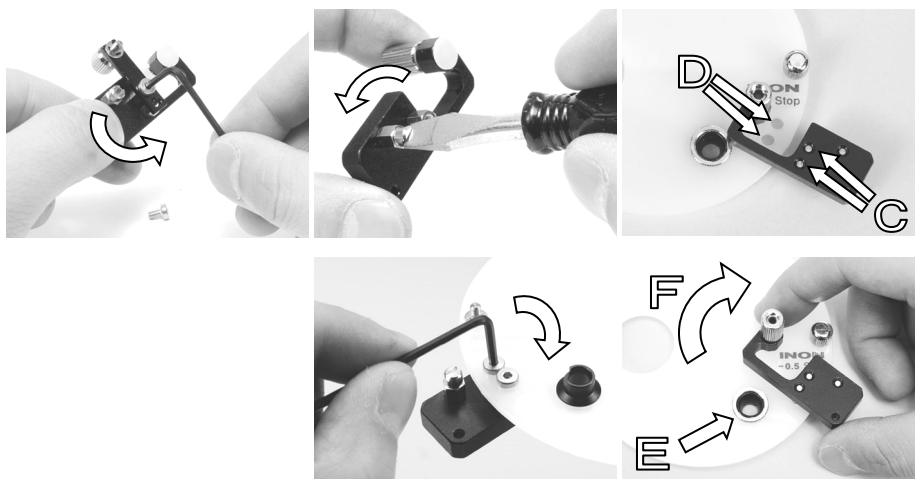
##### When using a diffuser

Unscrew “Slave D Holder Fixing Bar Cap Screw” by supplied Allen Wrench and remove “Slave D Holder Fixing Bar”. Then remove “Slave D Holder Guide Pin” by a flathead screwdriver.

Place the Slave D Holder Unit on a compatible diffuser so that screw holes [C] and holes [D] of the diffuser matches then interlock them by removed screws.

DO NOT tighten too much to avoid damage on the diffuser.

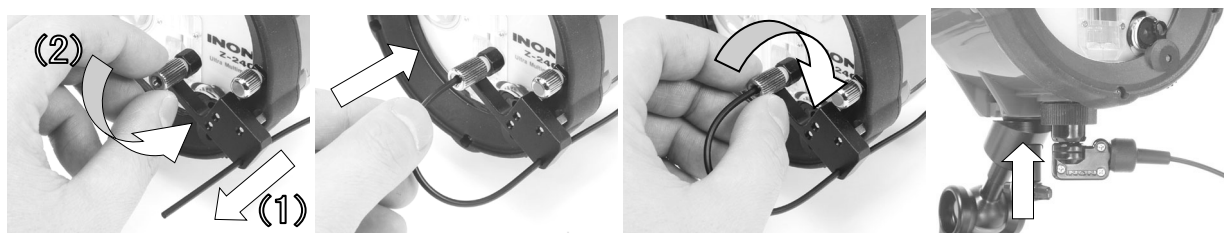
Also when attaching on a Diffuser(External Auto), make sure not to cover the Light Adjustment Sensor hole on the diffuser as shown [E], [F] in image below.



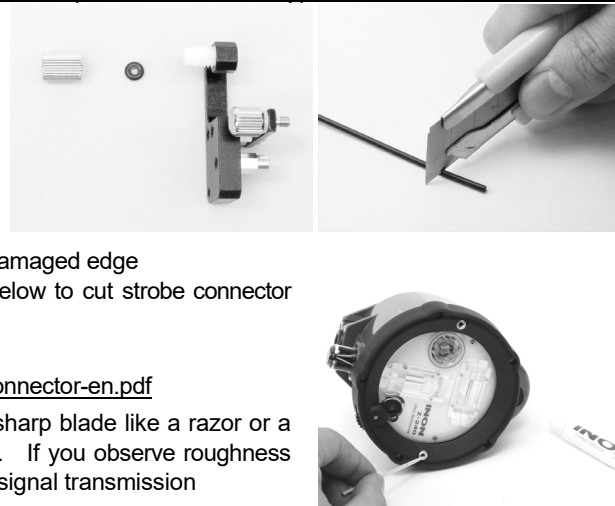
#### • Attach Optical D Cable LL Type L

As in below image, pass “Optical D Cable LL Type L” through a hole of the “Slave D Holder Unit”(1) and unscrew the “Optical D Cable Fixing Dial”(2). Then inlet the bare end of the “Optical D Cable LL Type L” in the “Optical D Cable Fixing Dial” all the way and tighten the dial to securely fasten the cable (4).

Finally attach the connector of the “Optical D Cable LL Type L” on the slave sensor of slave strobe (5).

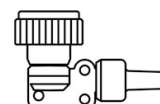


- Maintenance** :
- First remove “Optical D Cable LL Type L” and “Slave D Holder Unit 2” from strobe/diffuser after use and soak them in fresh water (below 30°C/ 86°F) for several hours to dissolve any salt build up. Blow off water drop by air gun/blower and dry them in shaded and well ventilated area. It may take several days to completely dry.
  - Especially take care to clean the both edge of the “Optical D Cable LL Type L” with the cable removed from the “Slave D Holder Unit 2” to dissolve any salt build up. Scratch or cloud with salt build up on the edge may lead poor signal transmission.
  - Be careful not to lose parts of removed “Slave D Holder Unit 2”.
  - In the event of poor signal transmission resulting from scratch/cloud or necessity to shorten the cable, it is possible to cut the cable to refresh the damaged edge or to get desired length. Refer to our web site below to cut strobe connector side.
- “L Connector Modification Instruction”  
[http://www.inon.jp/pdf-dl/\\_userdata/ModifyCableConnector-en.pdf](http://www.inon.jp/pdf-dl/_userdata/ModifyCableConnector-en.pdf)
- When you cut the Optical D Cable Type L, use sharp blade like a razor or a utility knife and make sure to cut the edge flatly. If you observe roughness on the cable section, cut it again to prevent poor signal transmission
- Periodically grease up the screw hole of strobe to avoid 「salt build-up」 or 「ionization」 which may cause sticking.



- Handling precaution:**
- “Optical D Cable LL Type L” has ultra durability (minimum bend radius 2mm) but inner portion could be damaged when bending less than radius of 2mm or excessive shock. And if the cable being bended for long time, it will not back to original shape. Replace with optional 「Replacement Optical D Cable LL Type L」 in case of poor signal transmission.
  - When carrying your camera system, DO NOT hold the Optical D Cable LL Type L with being connected to a housing or a strobe to prevent the fiber optics coming off from the L- Connector or accidental damage on strobe/L-Connector/Optical Cable etc.

- Optional parts** :
- Replacement Optical D Cable LL Type L  
① in the product illustration without connector.
  - Slave D Holder Unit 2 with spare parts  
②, ③ and ④ in the product illustration.
  - L-Connector Kit (strobe)  
Replacement strobe connector unit without a cable. Same strobe connector as originally installed on this product.
  - Sensor Plug · Wireless  
Replacement sensor plug unit originally installed on this product.
  - Sensor Plug · Non-Wireless  
Replacement Sensor Plug unit to be replaced with originally installed Sensor Plug to use for Non-Wireless strobes described on the first page of this manual..



INON Inc.

2-18-9, Dai, Kamakura,  
Kanagawa 247-0061 JAPAN

E-mail [support@inon.co.jp](mailto:support@inon.co.jp)

Fax. +81(0)467-48-2178

URL <http://www.inon.jp/>

November 2018