

# INON

## INON MRS100 Port Type U II Set

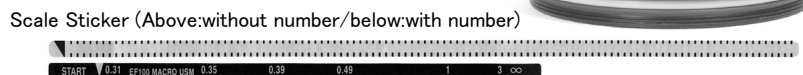
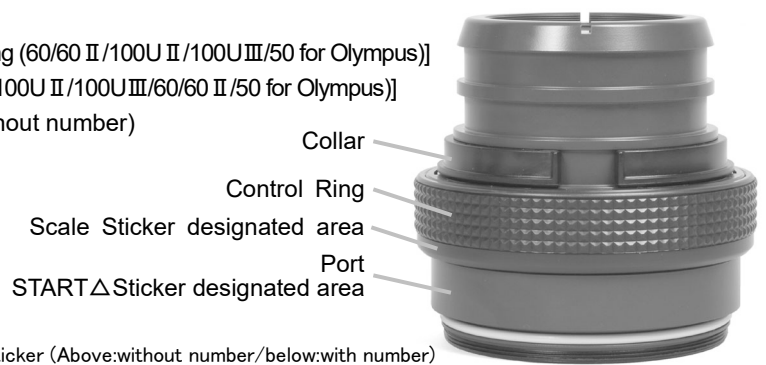
Thank you for purchasing INON product.

INON MRS Port series is compatible with INON unique technology 「INON MRS System (PAT.P)」 to control lens focusing operation by magnetic attraction without mechanical gear. **MRS100 Port Type U II is exclusively for Canon 100mm Macro USM Lens.**

### Features

- MRS100 Port enables you to smoothly control manual focusing by rotating the MRS Control Ring on the port as like operating the lens itself on land.
- INON「UCL-330 Close-up Lens」/「UCL-165M67 Close-up Lens」and underwater TTL Auto strobe 「Z-22」 can be directly attached on this port. Attaching optional 「EXT. Ring 18/36/L」 supports high magnification shooting together with a teleconverter.

- Package contents :**
- MRS100 Port Type U II
  - Control Ring [MRS Magnet Control Ring (60/60 II/100U II/100U III/50 for Olympus)]
  - Collar [Collar(MF STD II, MRS100U/100U II/100U III/60/60 II/50 for Olympus)]
  - Scale Sticker x 2 (with number/without number)
  - START  $\Delta$  Sticker
  - INON Grease



- Compatible housing:**
- INON X-2 for EOS10D, X-2 for EOS20D, X-2 for EOS30D, X-2 for EOS50D/40D, X-2 for EOS60D, X-2 for EOS70D, X-2 for EOS6D, X-2 for EOS80D, X1 series

- Compatible lens :**
- Canon EF100mm F2.8 Macro USM

- Installation/usage :**
- Dismount the Collar/Control Ring from the Port. Open the mouth of the Collar little bit to take it out from the Port towards to subject side. Dismount the Control Ring in same way.
  - Attach Scale Sticker on the designated area of the Control Ring. Attach the Scale Sticker to see letters upright position in above product image.
  - Make sure that there is no dust/damage on the O-ring A, O-ring A groove, O-ring contact surface of the housing. Then set the Port on the housing. Refer to housing user manual for detail of checking O-ring/O-ring groove/O-ring contact surface.
  - Adhere the START  $\Delta$  Sticker at 「START  $\Delta$  Sticker designated area」 on the port where easy to see underwater so that upper side of letters towards to subject sides.
  - Install the MRS Magnet Ring Set (option) on compatible lens then set combined camera/lens in compatible housing. Refer to respective user manual how to set the Magnet Ring on a lens or to set a camera/lens in the housing.
  - Install Control Ring/Collar on the Port by the opposite procedure of dismounting them.
  - Turn the Control Ring to the direction indicated by  $\rightleftarrows$  on the Start  $\Delta$  Sticker to align the  $\Delta$  mark with the  $\Delta$  mark of the Scale Sticker.
  - After matching two  $\Delta$  marks in above, slowly turn the Control Ring to the same direction until the two  $\Delta$  mark matches again. When turning the Control Ring to the other way from this point until 「 $\infty$ 」 of the Scale Sticker, indications on the lens and on the Scale Sticker is synchronized. You can reset underwater by following this procedure in case you miss proper synchronization.
    - ※ This synchronization is only usable when focus mode switch is set to 「MF」 and not available when using auto focus/full time manual focus with focus mode switch set to 「AF」.
    - ※※ Dismount the Collar and the Control Ring to remove trapped sand/iron sand between the Control Ring and the Port as necessary to avoid damage on them.

- Handling Precautions:**
- Protect from impact shock and vibration, such as vibrating boat deck to prevent malfunction or flooding of the product.
  - Do not expose to extreme heat, such as inside of a sun-heated car, or in hot direct sunlight, such as a beach or boat deck. Doing so may cause deformation, damage and subsequent flooding.

- Maintenance** :
- After using port underwater, first rinse and then soak in fresh water (below 30°C/85°F) for several hours, to dissolve any salt build-up. When soaking in fresh water, slowly turn the Control Ring to work out any salt or sand trapped in the gaps. Refer to housing user manual for detail.
  - Blow off remaining water and leave the port at shaded and well-ventilated area to dry with no water drops on the lens surface (it may take several days to completely dry).
  - When you remove the Control Ring, apply thin film of supplied grease on inner surface of the Control Ring. For maintenance method of O-rings, refer to housing user manual.

- Installing Z-22 Strobe:**
- Optional Fixing Ring is necessary to attach Z-22 on this product as in below illustration. Make sure to attach the Fixing Ring with correct orientation.

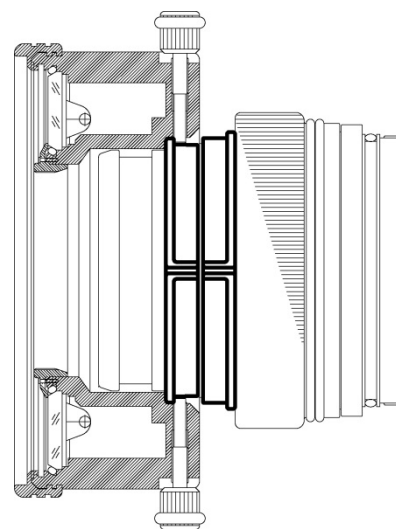
Following optional attachment lens can NOT use with the Z-22.

- UCL-330 Close-up Lens
- UCL-165M67 Close-up Lens

Following attachment lens is compatible with Z-22 attached on this product.

- Underwater Close-up Lens No.3

Underwater TTL Auto strobe「Z-22」  
Optional Fixing Ring: 1 pc



- Options** :
- UCL-330 Underwater Close-up Lens
  - UCL-165 M67 Underwater Close-up Lens  
Attaches on port front and enables to shorten minimum focal length to get closer to your subject. The lens construction is 2 elements 2 groups of inner coated optical glass and effectively suppress aberrations to obtain optimum performance of master lens. Two types of close-up lens are available to suit different subject size and accessibility; standard magnification model UCL-330 (focal length: 330mm ※) and high magnification model UCL-165 M67 (focal length: 165mm (underwater)/135.6mm (air) ※).
  - Ext. Ring 18 (Kenko ×1.5)  
Ext. Ring 36 (Kenko ×2)  
Ext. Ring L  
An Ext. Ring is necessary to use compatible teleconverter. Attach an Ext. Ring between port and housing.  
※ Ext. Ring 18 (Kenko ×1.5) Effective length 18mm,  
Compatible teleconverter: Kenko x1.5 Teleplus MC4 DG for Canon EOS  
Ext. Ring 36 (Kenko ×2) Effective length 36mm,  
Compatible teleconverter: Kenko x 2 Teleplus MC7 DG for Canon EOS  
Ext. Ring L Effective length 65mm,  
Compatible teleconverter: Kenko x 3 Teleplus PRO300 3XM for Canon EOS
  - Front Port Cover φ85  
Made from neoprene as same as wet-suits.
  - Collar(MF Std II, MRS100 U /100U II/100U III /60 /60 II/50 for Olympus)  
Optional Fixing Ring. Prepare necessary quantity depending on which product to attach on the port.
  - Scale Sticker Set MRS100 U/U II  
Set of the Scale Sticker and START△Sticker

INON Port MRS series Specifications	
Type	MRS100 Port TypeU II
Compatible lens	Canon EF100mm F2.8 Macro USM
Size	φ 114.5mm/4.5" x 108.2mm/4.3" (incl. Control Ring)
Weight	492g /17.4oz (incl. Control Ring, air)
Material / Surface Finishing	Corrosion-resistant aluminum alloy / Teflon molybdenum coating
Glass material / Surface Finishing	Optical glass / inner multi coating

INON Inc.

2-18-9, Dai, Kamakura,  
Kanagawa 247-0061 JAPAN

E-mail support@inon.co.jp

Fax. +81(0)467-48-2178

URL http://www.inon.co.jp/

January 2018