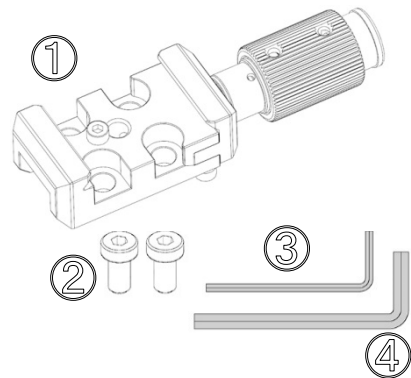


INON

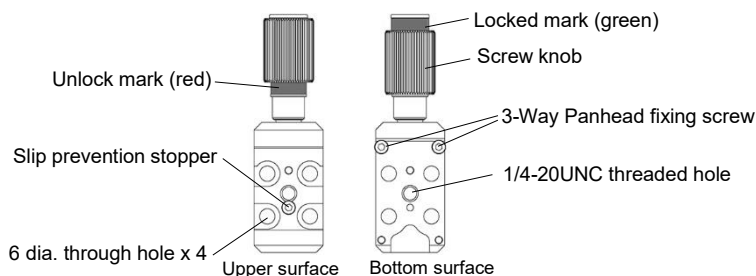
Quick Shoe W27 Clamp

Package contents:

- W27 Clamp Body ① ×1
- M6x10 Cap Screw ② ×2
- Allen Wrench 2mm ③ ×1
- Allen Wrench 5mm ④ ×1
- This user manual ×1



Overview :



Compatible products

[Quick Shoe]:

- Quick Shoe W50 Plate, Quick Shoe W27 Plate, Quick Shoe W95 Plate
- Quick Shoe L-Type Bracket

Note: Other brands' Arca-Swiss plate is **not** compatible with this product

[Arm Base]:

- Quick Shoe Main Base, UW 3-Way Panhead, UW Tripod Hub, Shoe Base 1/4-20UNC

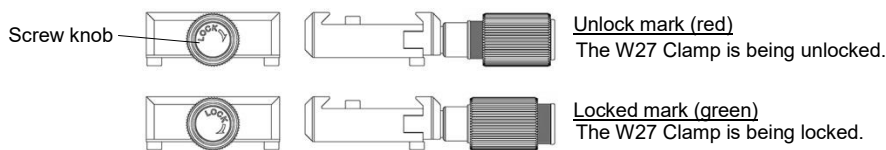
[Arm System]:

- D5 Holder, Grip Base D4/D Holder, Holder III

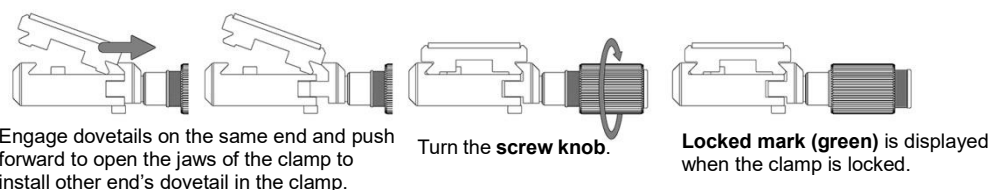
Installation

Quick Shoe Plate:

- Slowly turn the screw knob counterclockwise to unlock until **red unlock mark** is exposed. Turning the screw knob clockwise locks the clamp where **green lock mark** is exposed.



- Securely attach combined **Quick Shoe Plate** on the **W27 Clamp Body** by engaging their dovetails one by one as per below illustration. Once dovetails have been securely engaged, keep turning the **screw knob** clockwise until **locked mark (green)** is displayed.

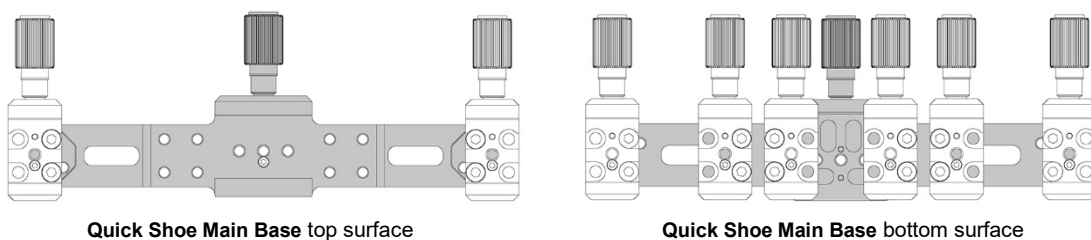


- Make sure to completely tighten the **screw knob** to securely lock the clamp to prevent the **Quick Shoe Plate** from accidentally sliding out of the clamp resulting in damage of combined product or personal injury.

Quick Shoe Main Base:

- Match the **6 dia. through holes** of the **W27 Clamp Body** to **M6 screw holes** of the **Quick Shoe Main Base** then fasten them with supplied two **M6x10 Cap Screws** by tightening them with supplied **Allen Wrench 5 mm**.
- The **Quick Shoe Main Base** can hold maximum eight **Quick Shoe W27 Clamps** (two on the top surface and six on the bottom surface) as show in the illustration below.

Maximum configuration

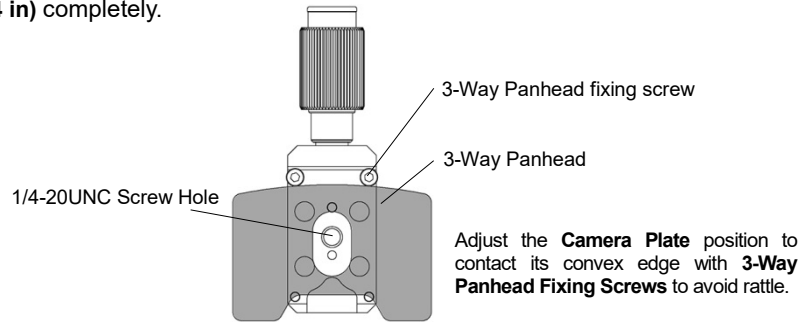


Quick Shoe Main Base top surface

Quick Shoe Main Base bottom surface

Installation**UW 3-Way Panhead:**

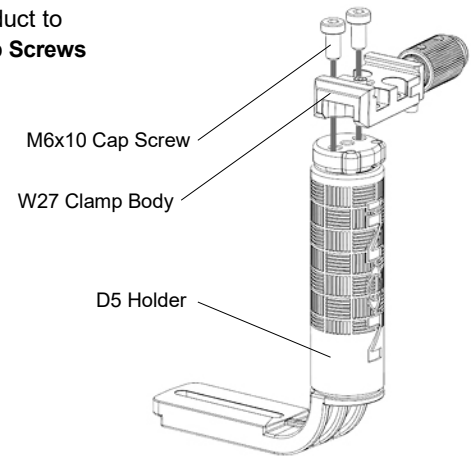
- Screw the **Tripod Screw (1/4 in)** of the **UW 3-Way Panhead** into the **1/4-20UNC screw hole** on the bottom surface of the **W27 Clamp Body**.
- Adjust the **Camera Plate** position so that its convex edge contacts **3-Way Panhead fixing screws** of the **W27 Clamp Body** to avoid accidental loose of the **Tripod Screw (1/4 in)** and rattle of the **Quick Shoe W27 Clamp** then tighten the **Tripod Screw (1/4 in)** completely.

**UW Tripod Hub:****Shoe Base 1/4-20UNC**

- Screw the **Tripod Screw (1/4 in)** of the respective product into the **1/4-20UNC screw hole** on the bottom surface of the **W27 Clamp Body** to fasten two components.

D5 Holder:**D Holder****Holder III**

- Match **M6 screw holes** on the top edge of the respective product to **6 dia. through holes** and fasten with supplied two **M6x10 Cap Screws** by tightening them with supplied **Allen Wrench 5 mm**.

**Maintenance:**

- After using, soak in fresh water to dissolve remaining salt/remove dirt and dry it in shaded and well ventilated area. Never apply flame or direct heat to this product or damage may result.
- **DO NOT** clean with organic solvent like alcohol, benzene or thinner and oil and fat containing/chemical material like rust inhibitor, lubricant, polish, detergent (especially alkaline detergent) to avoid damage/deformation/degradation of this product.
- Periodically apply grease on metal part of screws to prevent them from rusting.

Storage:

- After completely dry, store out of direct sunlight in well-ventilated, dry area. Avoid storing near chemicals, high ozone, large temperature and humidity fluctuations to avoid deformation, damage, rust, mold or corrosion etc.
- Keep the product out of reach of children. They may swallow parts of this product. See a doctor immediately if a child swallow parts.

Handling:

- Make sure to follow installation procedures described in this manual. Insufficient tightening of the **screw knob** may lead to accidental separation/damage/loss of combined products and/or damage.
- **DO NOT** use this product for non-compatible products to avoid accidental separation/damage/loss of combined products. Use only with compatible products listed in this user manual.
- Securely hold this product/combined products during transportation of whole system without applying excessive shock, vibration and/or pressure. **DO NOT** hold compatible products only to transport whole system to avoid accidental separation/damage/loss of combined housing/products.