

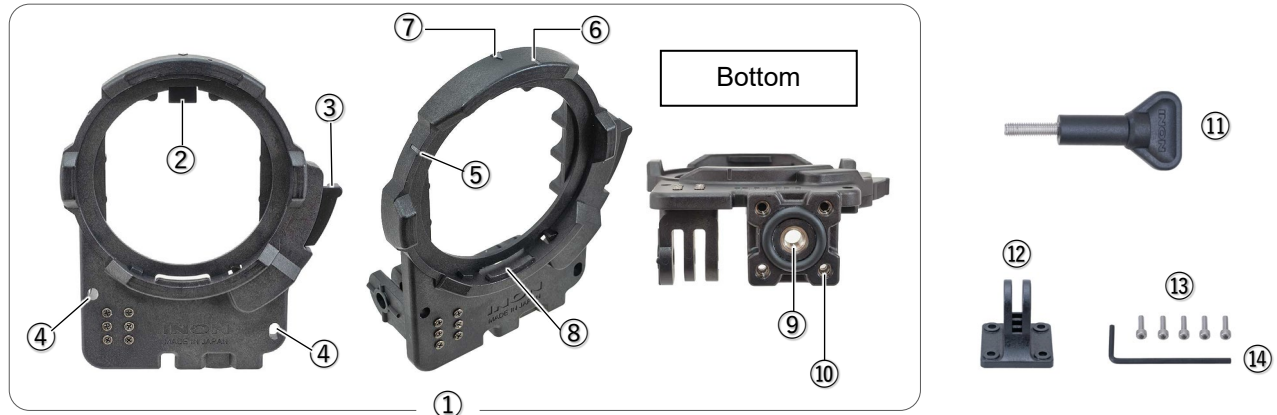
# INON

## INON ZD Front Mask for Osmo Action 5 Pro

Thank you for purchasing INON product.

The INON “ZD Front Mask for Osmo Action 5 Pro” is a multi-purpose product to attach INON ZD Mount lens, arm etc. on the official DJI Waterproof Case for Osmo Action 5 Pro.

### Package, Name of Parts



- ① ZD Front Mask for Osmo Action 5 Pro
- ② Hook
- ③ Lock Lever
- ④ Strap Eyelet
- ⑤ Guide A (Lens)
- ⑥ Guide B (Lens)
- ⑦ Guide C (Hood)

- ⑧ Lens Mount (ZD bayonet mount)
- ⑨ Optional Accessory Fixing Hole (M6 screw hole)
- ⑩ Male Adapter Fixing Hole (M3 screw hole x4)
- ⑪ M5 Thumbscrew
- ⑫ Male Adapter
- ⑬ Male Adapter Fixing Screw x5 including one spare.
- ⑭ Allen Wrench (WAF:2.5mm)

### Compatible Product

#### Compatible camera/housing

- DJI Waterproof Case for Osmo Action 5 Pro

#### Compatible ZD Mount Lens (\*1)

- INON UFL-GR140 ZD Underwater Semi-fisheye Conversion Lens (\*2)
- INON UFL-GR140 Pro ZD Underwater Semi-fisheye Conversion Lens (\*2)
- INON UFL-G140 ZD Underwater Semi-fisheye Conversion Lens
- INON UCL-G165II ZD Underwater Wide Close-up Lens
- INON UCL-G100 ZD Underwater Close-up Lens (\*3)
- INON UCL-G55 ZD Underwater Close-up Lens (\*3)

(\*1) Refer to the “Compatibility Chart” on our website for the supported shooting modes of each lens.

(\*2) For lenses shipped before August 3, 2025, the included hood may cause the side petals to appear in the image. The updated “**Lens Hood II (for UFL-GR140)**” is available for separate purchase if necessary. Lenses shipped on or after this date come standard with the Lens Hood II.

(\*3) From shipments on or after August 4, 2025, the Focus Stick included with the “UCL-G100” and “UCL-G55” is updated to a new shape that minimizes image intrusion on AcePro2 and Osmo Action 5. If needed, the updated part “**Focus Stick II**” is available separately.

#### Compatible products attached on the [bottom] of this product

- INON Direct Base III, Z Joint, Z Adapter MV, Quick Holder Set S-Z, Shoe Base M6, Light Adapter for GoPro®

#### Compatible products attached on the [bottom] via packaged [Male Adapter]

- INON Ball Adapter for GoPro, Compact Grip Base for GoPro, 4D Light Grip, GoPro/Insta360/DJI compatible mount

#### Compatible products attached on the [bottom] via optional [Mount Adapter]

- INON D5 Holder, Shoe Base 1/4-20UNC, UW Tripod Hub, UW 3-Way Panhead, Commercially available monopod, tripod

## Installation

- Insert the **Front Mask** hook into the back of the waterproof case's upper lens frame and push it all the way in.
- Fit the entire **Front Mask** onto the housing.
- Fasten the **Front Mask** and the waterproof case with the bundled **M5 Thumbscrew**.

**!** Make sure insert hook into back of lens frame before fitting. Forcing may break the hook. To remove, reverse the procedure.



## Lens Installation

- Match **Guide A [Lens]** with **Guide A [Mask]** as in below left image and put the male bayonet mount of the lens in the ZD bayonet mount of this product.
- Rotate the lens clockwise until **Guide A [Lens]** is coupled with **Guide B [Mask]** where you should feel and hear clicking
- When removing the lens, with pressing the Lock Lever, rotate the lens counterclockwise.

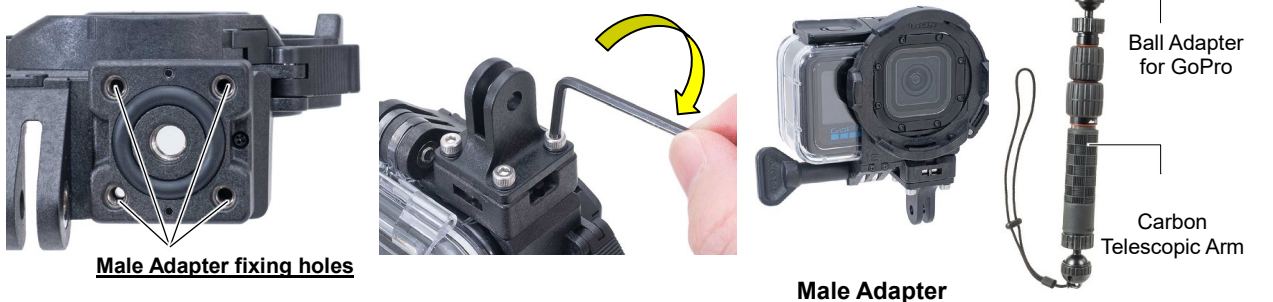
**!** When unlocking, press the lock lever in firmly before turning the lens. Otherwise, the lock will not be released. (If force is applied to the lens before pressing the lock lever, the lock will not be released.)



- Once submerged, remove the lens underwater and shake it well to drop trapped bubbles especially from the rear lens surface then install the lens on the ZD Front Mask again following same procedure.

## Male Adapter Installation

Place the adapter on the bottom of this product and fix with supplied 4 x Male Adapter Fixing Screws by using supplied Allen Wrench (WAF: 2.5mm). Using **Male Adapter** allows to attach optional accessories as per "selfie set" shown in the right.



## Direct Base III, Quick Hoder Set S-Z, Z Adapter MV Installation

Directly attachable at “M6 Screw Hole” on the bottom of this product.



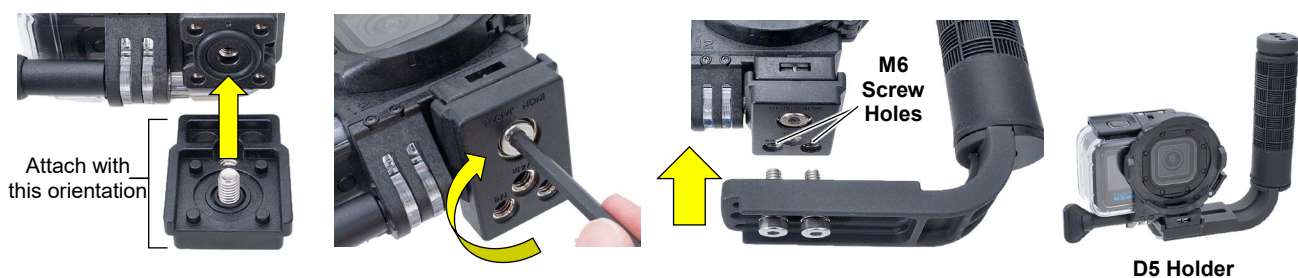
## Monopod, Tripod Installation via optional Mount Adapter

Attach the optional **Mount Adapter** on the bottom of this product as in below images. Fasten it by pre-installed M6 Screw on the **Mount Adapter** firmly screwed into M6 Screw Hole by using Allen Wrench (WAF: 4mm). A tripod etc. can be attached at Tripod Screw Hole (1/4in. screw hole) on the **Mount Adapter**.



## D5 Holder via optional Mount Adapter

Attach the optional **Mount Adapter** on the bottom of this product as in below images. Fasten it by pre-installed M6 Screw on the **Mount Adapter** by firmly screwed it into M6 Screw Hole by using Allen Wrench (WAF:4mm). Optional **D5 Holder** is attached on the left side of this product at “M6 screw holes” on the **Mount Adapter**.



## Before Installation

- **DO NOT screw the “M5 Thumbscrew” to the Front Mask body strongly without the Dive Case to prevent accidental damage.**
- **DO NOT** inquire of DJI installation of this product as it is not under the control of DJI. The user must take full responsibility for the installation/use of this product.
- INON Inc. shall not be liable for any failure of the housing, housing accessory or camera due to installation/use of this product.
- INON Inc. shall not be liable in any way for any incidental damages (such as expenses incurred in taking pictures/footages or loss of profit that should have been gained by the pictures/footages) that may result from flooding or other problems caused by the installation/use of this product
- **Installation and use of this product shall be deemed as full consent of the user to the above conditions.**



## Maintenance

- Apply thin film of grease to the top edge of screw shaft of adapters, base to prevent anchoring due to salt build-up.
- After use, rinse with fresh water to remove salt and other stains, and place in a well-ventilated area out of direct sunlight to dry thoroughly. **DO NOT** expose directly to fire or heat as this may cause deformation or damage.
- **DO NOT** use organic solvents such as alcohol, benzene, thinner, or oils/chemicals such as rust inhibitors, lubricants, glazing agents, or detergents (especially alkaline detergents) when cleaning the product. Some of the components of this product may change when exposed to the above substances, such as melting or becoming brittle.
- If the product is not used for more than a week, please remove and store it. Storing the product being attached on the combined product for extended period may cause deformation/damage due to continuous force applied to the combined product.

## Options

### • **Mount Adapter (compatible with all Front Mask)**

Optional part for mounting to the bottom of the front mask.

Equipped with one 1/4" and two M6 screw holes for attaching a tripod or D5 holder.



### **Front Cap (compatible with all Front Mask)**

Cap for the ZD front mask. Protects the housing-side lens surface when not using an attachment lens, e.g., during transport.



## Specifications

### INON ZD Front Mask for Osmo Action 5 Pro Specifications (\*1)

Model	ZD Front Mask for Osmo Action 5 Pro
Size (*excl. handle)	82 mm/3.2 inch (W) × 98 mm/3.9 inch (H) × 34 mm/1.3 inch (D)
Weight	Air: approx.60 g/2.1 oz, underwater approx. 25 g/0.9 oz
Material/surface finishing	PC, POM etc.

(\*1) Subject to change without prior notice

(\*2) "Insta360" is trademark or registered trademark of DJI..

INON Inc.

2-18-9, Dai, Kamakura,  
Kanagawa 247-0061 JAPAN

E-mail support@inon.co.jp

Fax. +81(0)467-48-2178

URL http://www.inon.jp/

October 2025

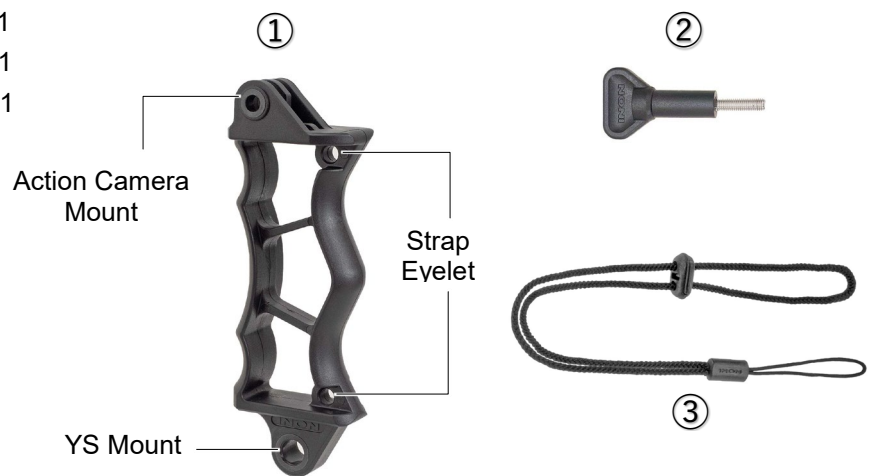
# INON

## INON 4D Light Grip

Thank you for choosing INON product. Please read this manual thoroughly before use to ensure proper and safe use, and retain it for future reference.

### Package, Name of Parts

- 4D Light Grip ① ×1
- M5 Thumbscrew ② ×1
- Hand Strap ③ ×1



### Compatible Product

#### Action Camera Mount (GP)

- INON ZD Front Mask / SD Front Mask (※)
- INON M67 Filter Adapter (※)
- INON SD Mount Base (※)

(※) via Male Adapter supplied with each product

#### YS Mount

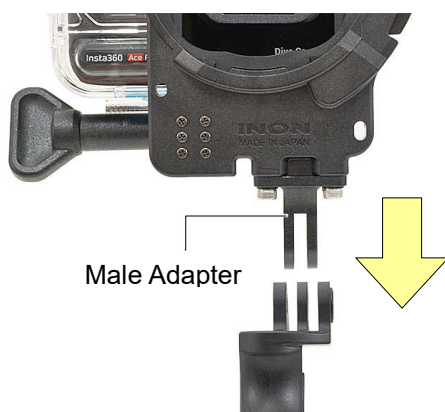
- INON Quick Holder Set S-LF
- INON Quick Holder Set S-LE
- INON Quick Base M6W
- INON Quick Base S
- INON Single Light Holder LF
- INON Single Light Holder LE
- INON Rotatable YS Extension Bar
- INON Z Joint



Setup Example

### Installation (Action Camera Mount)

Align with the *Male Adapter* attached to the compatible product, and secure them together using the supplied *M5 Thumbscrew*.



## Installation (YS Mount)

Align with the YS Mount on the compatible product, and secure them using the supplied (with compatible product) M8 Thumbscrew.



## Before Installation

- **DO NOT screw the “M5 Thumbscrew” to the 4D Light Grip strongly without the Front Mask to prevent accidental damage.**
- **DO NOT** contact action camera manufactures regarding installation of this product, as it is not under their responsibility. The user is solely responsible for the installation/use of this product.
- INON Inc. shall not be liable for any failure of the housing, housing accessory or camera due to installation/use of this product.
- INON Inc. shall not be liable in any way for any incidental damages (such as expenses incurred in taking pictures/footages or loss of profit that should have been gained by the pictures/footages) that may result from flooding or other problems caused by the installation/use of this product
- **Installation and use of this product shall be deemed as full consent of the user to the above conditions.**

## Maintenance

- After use, rinse with fresh water to remove salt and other stains, and place in a well-ventilated area out of direct sunlight to dry thoroughly.
- **DO NOT** expose directly to fire or heat as this may cause deformation or damage.
- **DO NOT** use organic solvents such as alcohol, benzene, thinner, or oils/chemicals such as rust inhibitors, lubricants, glazing agents, or detergents (especially alkaline detergents) when cleaning the product. Some of the components of this product may change when exposed to the above substances, such as melting or becoming brittle.
- Apply thin film of grease to the top edge of screw shaft of adapters, base to prevent anchoring due to salt build-up.
- If the product is not used for more than a week, please remove and store it. Storing the product being attached on the combined product for extended period may cause deformation/damage due to continuous force applied to the combined product.

## Specifications

### INON 4D Light Grip (4 Direction Light Grip) Specifications (\*1)

Model	4D Light Grip
Mount standard	GP Standard + YS Standard
Size (excl. handle)	135 mm / 5.3 in (H) × 28 mm / 1.1 in (W)* × 48 mm / 1.9 in (D) *Grip: 19mm / 0.7 in
Weight (incl. handle)	Air: approx. 60 g / 2.1 oz, underwater: approx. 20 g / 0.7 oz
Material/surface finishing	PC etc.

(\*1) Subject to change without prior notice

(\*2) All brand, product, and feature names in this manual are trademarks or registered trademarks of their respective owners.

INON Inc.

2-18-9, Dai, Kamakura,  
Kanagawa 247-0061 JAPAN  
E-mail support@inon.co.jp  
Fax +81(0)467-48-2178  
URL <http://www.inon.jp/>

October 2025