

INON

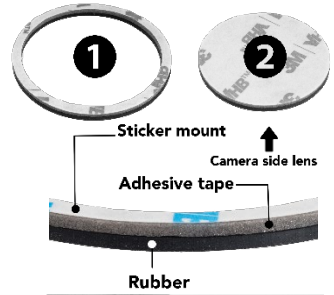
Split Easy for UFL-G140

Package contents : • Split Easy for UFL-G140 ① ×1
• Positioning sheet ② ×1

Compatible product : INON UFL-G140 SD

Compatible camera/housing : 「GoPro®HERO8 Black」
「GoPro®HERO9 Black」 「GoPro®HERO10 Black」

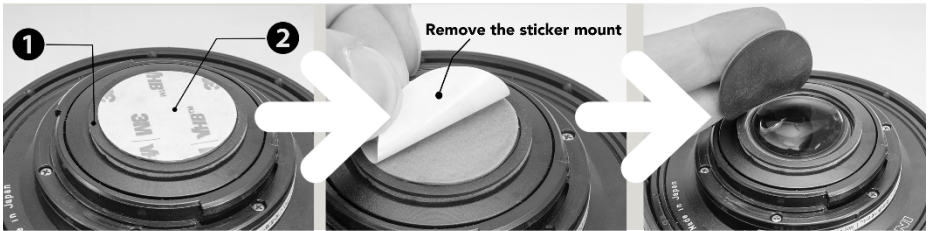
Installation:



(a) Wipe off any dust from the camera side lens surface.

(b) Place ② over the lens surface to align it.

(c) Remove the sticker mount from ①.



(d) Place ① on the lens without letting ② move or overlap the lens surface.

(e) Once ① has been attached, remove the sticker mount from ②.

(f) Put your finger on the adhesive side of ② and lift it up.

※The sticker may be easily peeled off if the lens is attached to the GoPro® immediately after the installation. Leave for about 24 hours to ensure maximum adhesion.

※It is recommended to install the lens with the lens and housing being wet as installing the lens with dry condition may lead to peeling off of this product.

Usage : Attache the Split Easy for UFL-G140SD on the camera side lens of the UFL-G140 SD. When using, remove the lens and reinstall on the housing underwater to fill the space between the lens and housng with water enabling perfect split shot without having two waterlines in an image.

Please note that "UFL-G140 SD" lens is originally designed for underwater use only and thus cannot focus on distant objects on land (air) side when shooting a split shot.

INON Inc.

2-18-9 Dai, Kamakura, Kanagawa 247-0061 JAPAN

E-mail: support@inon.co.jp Fax: +81(0)467-48-2178

URL: <http://www.inon.jp/>

As of October 2022