

INON

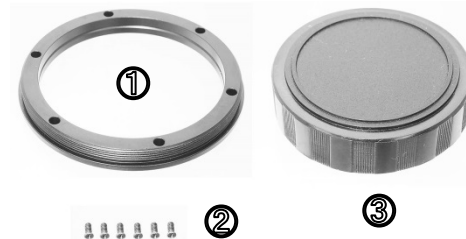
INON M67 Flip Mount Adapter for UCL-67/90

Thank you for purchasing INON product.

The "INON M67 Flip Mount Adapter for UCL-67/90" is an optional adapter to replace with original lens mount of INON 「UCL-67 M67 / UCL-67 LD」, 「UCL-90 M67 / UCL-90 LD」 Underwater Close-up Lens to attach the lens on a flip lens holder from other manufacture such as Nauticam flip holder etc. with rear lens element being close enough to housing lens port.

Not compatible with any flip holder with 57mm or smaller diameter such as SAGA etc.

- Package contents :**
- Flip Mount Adapter for UCL-67/90 ×1 ··①
 - M2x4 Precision Screw ×6 ··②
 - Rear Lens Cap (*when this adapter is installed) ×1 ··③
 - This user manual

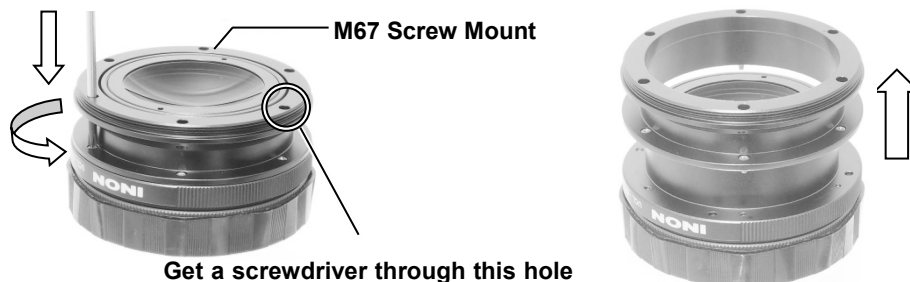


- Compatible product :**
- INON 「UCL-67 M67」/「UCL-67 LD」/ 「UCL-90 M67」/「UCL-90 M67」Underwater Close-up Lens

Installation : 1) **Remove original lens mount from 「UCL-67 M67 / UCL-67 LD」, 「UCL-90 M67 / UCL-90 LD」**

■ **「UCL-67 M67」 / 「UCL-90 M67」**

Remove six M2x4 fixing screws from the lens barrel by #0 Phillips precision screwdriver (**※shaft diameter 3mm or less**). Keep removed screws/lens mount for your future use.



■ **「UCL-67 LD」 / 「UCL-90 LD」**

Remove six M2x4 fixing screws from the lens barrel by #0 Phillips precision screwdriver (**※shaft diameter 3mm or less**). Then, remove a "spacer" under the "LD Bayonet Mount" by removing six fixing screws. Keep removed screws/LD Bayonet Mount/spacer as they are necessary when you need to install the "LD Bayonet Mount" again. When you re-install the LD Bayonet Mount, put the LD bayonet Mount so that the guide on the "LD Bayonet Mount" locates as shown in below image.



If you have any difficulty to unscrew M2x4 fixing screw(s), do not proceed any further.

as you could damage fixing screw(s) and the original "M67 Screw Ring"/"LD Bayonet Mount" can not be separated from 「UCL-67 M67/UCL-67 LD」, 「UCL-90 M67/UCL-90 LD」. Please consult with your purchasing dealer for advice.

(continued)

2) Put grease in the screw holes of the lens barrel

Apply grease (supplied with an underwater case) in six screw holes to avoid anchoring of fixing screws.

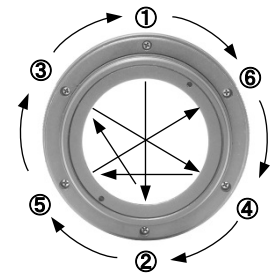


3) Attach "M67 Flip Mount Adapter" on the lens barrel

Put the "M67 Flip Mount Adapter" on the lens barrel so that screw holes both on the "M67 Flip Mount Adapter" and lens barrel are matched then fasten them with packaged M2x4 fixing screws.



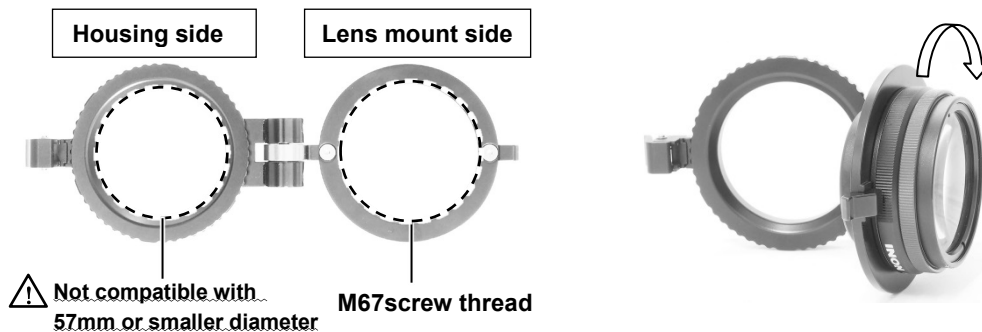
When tightening M2x4 fixing screws, first partially tighten them in order of ①→②→③→④→⑤→⑥, then tighten them further in same order. Lastly completely tighten them by making clockwise pattern (①→⑥→④→②→⑤→③). Make sure tighten screws evenly and not too tight not to damage the lens itself.



Installing on flip lens holder

Screw the UCL-67 / UCL-90 with this product to the M67 screw thread of the flip lens holder all the way.

(※Not compatible with any flip lens holder with 57mm or smaller diameter.)



Handling precautions

- Please follow above installation method to attach this product and note that you have to take full responsibility for the installation. If you are not confident for proper installation, please consult your purchasing dealer.
INON Inc. cannot take any responsibility for any trouble/damage(damage to lens, "M67 Flip Mount Adapter for UCL-67/90", flip lens holder) resulting from the installation.
- Should you have trouble like flooding caused by the installation, INON Inc. cannot take any responsibility for incidental damage (relevant expense to take a shot etc.)
- **Please perform the installation only if you can accept above conditions.**

INON Inc.

2-18-9, Dai, Kamakura
Kanagawa 247-0061
E-mail support@inon.co.jp
Fax. +81(0)467-48-2178
URL <http://www.inon.jp/>

December 2017